

HOUSE - TOWNHOUSE

Bingley Court
Canterbury City Centre
Canterbury
CT1 2SW

£2,250 Per Month

PREMIUM STUDENT HOUSE
FIVE DOUBLE BEDROOMS
TWO BALCONIES
TWO BATHROOMS
HIGH SPEED INTERNET
BILLS PACKAGE AVAILABLE
FULLY FURNISHED



absolute living

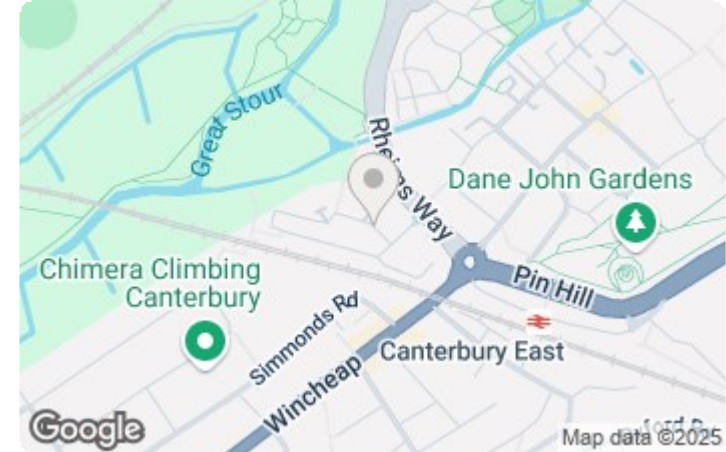
LET AGREED
3RD JULY 2025



5 BED HOUSE - TOWNHOUSE LOCATED IN CANTERBURY

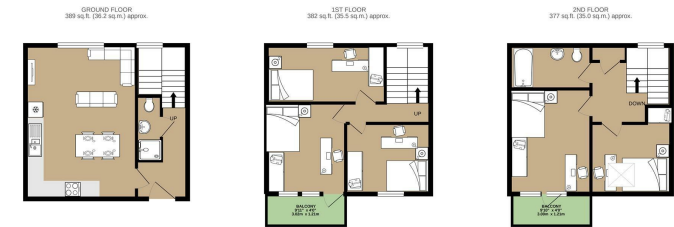
BINGLEY COURT CT1. Price is per person per month for a whole group of 5. Five bedroom house over three floors with two bathrooms. All the bedrooms are of an equal size and two bedrooms benefit from private balconies. On the ground floor there is a spacious fully equipped kitchen/ reception. Located 30 secs from Aldi and an 8 minute walk into the centre of Canterbury whilst being close for the Unibus and St Augustines. This is a posh student house, the photos don't show wardrobes/ desks and chest of drawers but these will be provided. High speed wifi and fully refurbished in 2023 this home is waiting for your group. Available from the beginning July 2025 for a 12

Call us on
020 3002 9002
hello@absoluteliving.co.uk



Full Description

Modern open plan kitchen/ reception with large fridge/ freezer, washer dryer and dishwasher. Available from 3rd July 2025, bills package available. The house is modern; bills package available to cover Gas, Electricity, Water, Waste Water, High Speed Internet and TV Licence - please email or call to discuss. canterbury@absoluteliving.co.uk.



TOTAL FLOOR AREA: 1148 sq.ft. (106.7 sq.m.) approx.
Whilst every effort has been made to ensure the accuracy of the floor plan contained here, measurements of actual wall-to-wall, room and any other fixed and approximate and are for guidance purposes only and should be used as such by any prospective purchaser. The measurements and approximate floor levels are taken from the ground level. Made with Metageo (2020)

Energy Efficiency Rating	Current	Potential	Environmental Impact (CO ₂) Rating	Current	Potential
<p>Very energy efficient - lower running costs</p> <p>(92 plus) A</p> <p>(81-91) B</p> <p>(69-80) C</p> <p>(55-68) D</p> <p>(39-54) E</p> <p>(21-38) F</p> <p>(1-20) G</p> <p>Not energy efficient - higher running costs</p>			<p>Very environmentally friendly - lower CO₂ emissions</p> <p>(92 plus) A</p> <p>(81-91) B</p> <p>(69-80) C</p> <p>(55-68) D</p> <p>(39-54) E</p> <p>(21-38) F</p> <p>(1-20) G</p> <p>Not environmentally friendly - higher CO₂ emissions</p>		
<p>EU Directive 2002/91/EC</p> <p>England & Wales</p>			<p>EU Directive 2002/91/EC</p> <p>England & Wales</p>		

Agents Note: Whilst every care has been taken to prepare these particulars, they are for guidance purposes only. All measurements are approximate and are for general guidance purposes only and whilst every care has been taken to ensure their accuracy, they should not be relied upon and potential buyers are advised to recheck the measurements.

